

Collection "Musiques à bourdons"

Recueil 2

Danses
des
cornemuseux

Volume 1

à Laurence et Léa

Musique composée par André Rochard / 1999

Danses des cornemuseux

Pour 1 ou 2 cornemuses égales (sol/sol)

Volume 1 : de 1 à 12

Voici douze danses pour les cornemuses (en sol) dédiées à ceux (ci-dessous nommés) qui m'ont donné l'envie d'étudier et de composer pour cet instrument.

Toutes ces pièces peuvent être jouées soit en solo (première voix dans la partition), soit en duo. Elles seront accompagnées d'une percussion afin de respecter le phrasé rythmique principal fixe et obligé de chacune.

Elles sont écrites au départ pour les cornemuses en sol mais peuvent être exécutées sur d'autres couples d'instruments (vielles à roue par exemple) ou d'autres mélanges (flûte et violon), tout en gardant des bourdons.

Remarque : Composées, en rapport direct et intime avec les bourdons (notes fixes) donnant la base fondamentale de l'inspiration, ces compositions dépourvues de ceux-ci feraient entendre une musique ne correspondant pas à une bonne pratique, à une bonne écoute des différents climats, couleurs, émotions et sentiments qui naturellement s'en dégagent.

Danse 1 en 2/2 à Gilles Desserprié

Danse 2 en 7/8 à Eric Montbel

Danse 3 en 10/8 à Jean Blanchard

Danse 4 en 9/8 à Rémi Dubois

Danse 5 en 7/4 à Louis Soret

Danse 6 en 8/4 à Jean-Pierre Van Hees

Danse 7 en 5/8 à Pierre Hervé

Danse 8 en 6/8 + 3/4 à Raphael Thierry

Danse 9 en 11/4 à Robert Amyot

Danse 10 en 13/8 à Dominique Paris

Danse 11 en 16/8 à Sophie Jacques de Dixmude

Danse 12 en 6/8 + 3/4 à Bernard Blanc

Danse des cornemuseux 1

à Gilles Desserprit

Composition de André Rochard /1999

Refrain 1

1 $\text{♩} = 80$ 2 3 4

Musical notation for Refrain 1, measures 1 to 4. The piece is in 2/4 time with a tempo of 80 beats per minute. The melody is in the right hand, and the bass line is in the left hand. The key signature has one flat (B-flat). The first measure starts with a B-flat in the right hand and a B-flat in the left hand. The second measure has a B-flat in the right hand and a B-flat in the left hand. The third measure has a B-flat in the right hand and a B-flat in the left hand. The fourth measure has a B-flat in the right hand and a B-flat in the left hand.

A

1 2 3 4

Musical notation for section A, measures 1 to 4. The piece is in 2/4 time. The melody is in the right hand, and the bass line is in the left hand. The key signature has one flat (B-flat). The first measure starts with a B-flat in the right hand and a B-flat in the left hand. The second measure has a B-flat in the right hand and a B-flat in the left hand. The third measure has a B-flat in the right hand and a B-flat in the left hand. The fourth measure has a B-flat in the right hand and a B-flat in the left hand.

Refrain 2

1 2 3 4

Musical notation for Refrain 2, measures 1 to 4. The piece is in 2/4 time. The melody is in the right hand, and the bass line is in the left hand. The key signature has one flat (B-flat). The first measure starts with a B-flat in the right hand and a B-flat in the left hand. The second measure has a B-flat in the right hand and a B-flat in the left hand. The third measure has a B-flat in the right hand and a B-flat in the left hand. The fourth measure has a B-flat in the right hand and a B-flat in the left hand.

B

1 2 3 4

Musical notation for section B, measures 1 to 4. The piece is in 2/4 time. The melody is in the right hand, and the bass line is in the left hand. The key signature has one flat (B-flat). The first measure starts with a B-flat in the right hand and a B-flat in the left hand. The second measure has a B-flat in the right hand and a B-flat in the left hand. The third measure has a B-flat in the right hand and a B-flat in the left hand. The fourth measure has a B-flat in the right hand and a B-flat in the left hand.

Refrain 3

1 2 3 4

Musical notation for Refrain 3, measures 1 to 4. The piece is in 2/4 time. The melody is in the right hand, and the bass line is in the left hand. The key signature has one flat (B-flat). The first measure starts with a B-flat in the right hand and a B-flat in the left hand. The second measure has a B-flat in the right hand and a B-flat in the left hand. The third measure has a B-flat in the right hand and a B-flat in the left hand. The fourth measure has a B-flat in the right hand and a B-flat in the left hand.

Danse des cornemuseux 1

C

A musical score for the song 'The Rose Tree'. The score is written for piano (p) and features a treble and bass clef. The melody is in the treble clef, and the accompaniment is in the bass clef. The key signature is one flat (B-flat), and the time signature is 4/4. The score is divided into four measures, each labeled with a number (1, 2, 3, 4) above the staff. The melody consists of eighth and quarter notes, while the accompaniment consists of eighth and quarter notes. The score ends with a double bar line and repeat dots.

Refrain 4

A musical score for the song "The Rose Tree". The score is written for piano (p) and features a melody in the right hand and a bass line in the left hand. The melody is in G major and 2/4 time. The score is divided into four measures, each labeled with a number (1, 2, 3, 4) above the staff. The first measure (1) starts with a treble clef and a key signature of one sharp (F#). The second measure (2) starts with a bass clef. The third measure (3) starts with a treble clef. The fourth measure (4) starts with a bass clef. The melody in the right hand is: 1. G4 (quarter), A4 (quarter), B4 (quarter), A4-G4 (beamed eighth notes), F#4 (quarter). 2. E4 (quarter), D4 (quarter), C4 (half). 3. B3 (quarter), A3 (quarter), G3 (half). 4. F#3 (quarter), E3 (quarter), D3 (half). The bass line in the left hand is: 1. G3 (quarter), F#3 (quarter), E3 (quarter), D3 (half). 2. C3 (quarter), B2 (quarter), A2 (half). 3. G2 (quarter), F#2 (quarter), E2 (half). 4. D2 (quarter), C2 (quarter), B1 (half). The score ends with a double bar line and repeat dots.

D

A musical score for the song 'The Rose Tree'. It features a piano introduction and four numbered measures of music. The score is written for piano on a grand staff with a treble and bass clef. The key signature has one flat (B-flat). The tempo is marked 'Allegretto' and the time signature is 3/4. The piano introduction consists of two measures. Measure 1: Treble clef has a quarter note G4, a quarter note A4, and a quarter note B4. Bass clef has a quarter note G2, a quarter note A2, and a quarter note B2. Measure 2: Treble clef has a quarter note B4, a quarter note C5, and a quarter note D5. Bass clef has a quarter note C3, a quarter note D3, and a quarter note E3. Measure 3: Treble clef has a quarter note E5, a quarter note F5, and a quarter note G5. Bass clef has a quarter note F3, a quarter note G3, and a quarter note A3. Measure 4: Treble clef has a quarter note A5, a quarter note B5, and a quarter note C6. Bass clef has a quarter note B3, a quarter note C4, and a quarter note D4. The score ends with a double bar line and repeat dots.

Refrain 5

A musical score for the song "The Rose Tree". The score is written for a piano, with a treble and bass staff. The key signature is one flat (B-flat major or D minor). The time signature is 4/4. The score is divided into two systems. The first system contains measures 1 through 4, and the second system contains measures 5 through 8. The melody is in the treble staff, and the bass staff provides a simple harmonic accompaniment. The score includes repeat signs and first/second endings. The first ending leads back to the beginning of the first system, and the second ending leads to the final measure of the piece.

Bourçons de sol
sur plusieurs octaves

Rythme

Tige de note basse = son grave de percussion

Tige de note haute = son aigu de percussion

Danse des cornemuseux 2

à Eric Montbel

Composition de André Rochard /1999

Refrain 1

1 $\text{♩} = 160$ 2 3 4

16'

16'

Detailed description: This block contains the musical notation for the first refrain. It consists of two staves, treble and bass clef, with a 7/8 time signature. The tempo is marked as 160 beats per minute with a quarter note symbol. The music is divided into four measures, numbered 1 to 4. Measure 1 starts with a repeat sign. The notation includes various note values, rests, and repeat signs at the end of each measure and the section.

A

1 2 3 4

Detailed description: This block contains the musical notation for section A. It consists of two staves, treble and bass clef. The music is divided into four measures, numbered 1 to 4. Measure 1 starts with a repeat sign. The notation includes various note values, rests, and repeat signs at the end of each measure and the section.

Refrain 2

1 2 3 4

Detailed description: This block contains the musical notation for the second refrain. It consists of two staves, treble and bass clef. The music is divided into four measures, numbered 1 to 4. Measure 1 starts with a repeat sign. The notation includes various note values, rests, and repeat signs at the end of each measure and the section.

B

1 2 3 4

Detailed description: This block contains the musical notation for section B. It consists of two staves, treble and bass clef. The music is divided into four measures, numbered 1 to 4. Measure 1 starts with a repeat sign. The notation includes various note values, rests, and repeat signs at the end of each measure and the section.

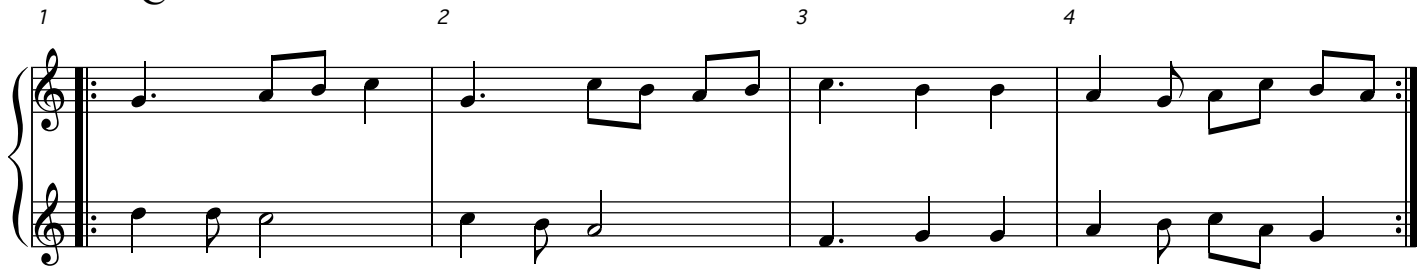
Refrain 3

1 2 3 4

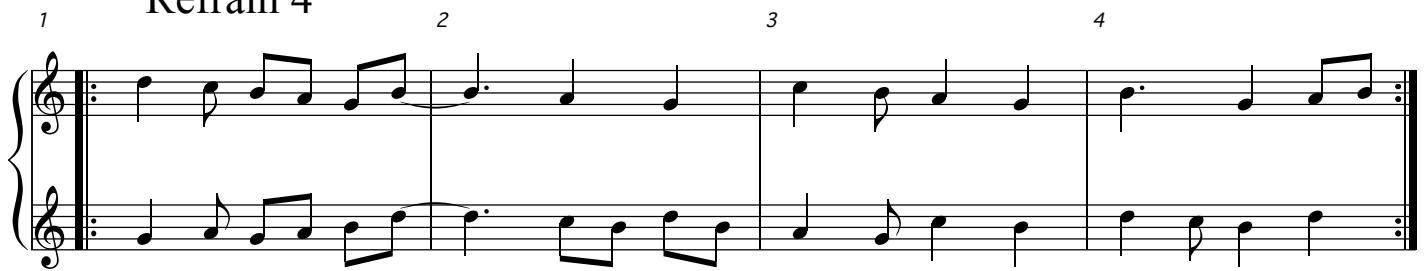
Detailed description: This block contains the musical notation for the third refrain. It consists of two staves, treble and bass clef. The music is divided into four measures, numbered 1 to 4. Measure 1 starts with a repeat sign. The notation includes various note values, rests, and repeat signs at the end of each measure and the section.

Danse des cornemuseux 2

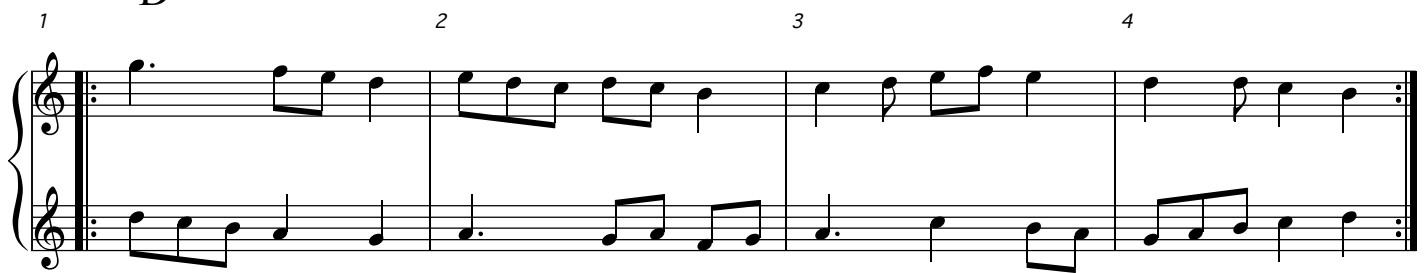
C



Refrain 4



D



Refrain 5



Bourdons de sol
sur plusieurs octaves

Rythme
Structure : 3-2-2



Tige de note basse = son grave de percussion
Tige de note haute = son aigu de percussion

Danse des cornemuseux 3

à Jean Blanchard

Composition de André Rochard /1999

Refrain 1

1 $\text{♩} = 90$ 2 3 4

16'

16'

Detailed description: This block contains the musical notation for the first refrain. It consists of two staves, treble and bass clef, with a key signature of one flat (B-flat). The time signature is 10/8. Above the first staff, there are four measures numbered 1, 2, 3, and 4. Measure 1 starts with a tempo marking '♩ = 90'. The notation includes various note values, rests, and repeat signs at the end of the fourth measure. The second staff also contains four measures of music, with a '16'' marking at the beginning.

A

1 2 3 4

Detailed description: This block contains the musical notation for section A. It consists of two staves, treble and bass clef, with a key signature of one flat. The notation includes various note values, rests, and repeat signs at the end of the fourth measure.

Refrain 2

1 2 3 4

Detailed description: This block contains the musical notation for the second refrain. It consists of two staves, treble and bass clef, with a key signature of one flat. The notation includes various note values, rests, and repeat signs at the end of the fourth measure.

B

1 2 3 4

Detailed description: This block contains the musical notation for section B. It consists of two staves, treble and bass clef, with a key signature of one flat. The notation includes various note values, rests, and repeat signs at the end of the fourth measure.

Refrain 3

1 2 3 4

Detailed description: This block contains the musical notation for the third refrain. It consists of two staves, treble and bass clef, with a key signature of one flat. The notation includes various note values, rests, and repeat signs at the end of the fourth measure.

Danse des cornemuseux 3

C

1 2 3 4

Refrain 4

1 2 3 4

D

1 2 3 4

Refrain 5

1 2 3 1. 2.

Bourbons de sol
sur plusieurs
octaves

Rythme
Structure : 3-2-2-3

Tige de note basse = son grave de percussion
Tige de note haute = son aigu de percussion

Danse des cornemuseux 4

à Rémy Dubois

Composition de André Rochard /1999

Refrain 1

1 $\text{♩} = 120$ 2 3 4

16'

16'

Detailed description: This block contains the musical notation for the first four measures of Refrain 1. It is written for two staves, both in treble clef with a key signature of one sharp (F#) and a 9/8 time signature. The tempo is marked as 120 beats per minute with a quarter note symbol. Measure numbers 1, 2, 3, and 4 are placed above the staves. The first staff has a '16'' marking at the beginning. The music consists of eighth and sixteenth notes, with some beamed sixteenth notes in measures 3 and 4. The piece ends with a double bar line and repeat dots.

A

1 2 3 4

Detailed description: This block contains the musical notation for section A, measures 1 to 4. It is written for two staves in treble clef with a key signature of one sharp (F#). Measure numbers 1, 2, 3, and 4 are placed above the staves. The music features a mix of eighth and sixteenth notes. The piece concludes with a double bar line and repeat dots.

Refrain 2

1 2 3 4

Detailed description: This block contains the musical notation for the first four measures of Refrain 2. It is written for two staves in treble clef with a key signature of one sharp (F#). Measure numbers 1, 2, 3, and 4 are placed above the staves. The notation is similar to Refrain 1, using eighth and sixteenth notes. The piece ends with a double bar line and repeat dots.

B

1 2 3 4

Detailed description: This block contains the musical notation for section B, measures 1 to 4. It is written for two staves in treble clef with a key signature of one sharp (F#). Measure numbers 1, 2, 3, and 4 are placed above the staves. This section features more complex rhythmic patterns, including beamed sixteenth notes and eighth notes. The piece concludes with a double bar line and repeat dots.

Refrain 3

1 2 3 4

Detailed description: This block contains the musical notation for the first four measures of Refrain 3. It is written for two staves in treble clef with a key signature of one sharp (F#). Measure numbers 1, 2, 3, and 4 are placed above the staves. The notation is consistent with the previous refrains, using eighth and sixteenth notes. The piece ends with a double bar line and repeat dots.

Danse des cornemuseux 4

C Rythme 2

Refrain 4 Rythme 1

D

Refrain 5

Tige de note basse = son grave de percussion
Tige de note haute = son aigu de percussion

Bourçons de sol
sur plusieurs octaves

Rythme 1
Structure : 2-3-2-2

Rythme 2
Structure : 3-3-3

Danse des cornemuseux 5

à Louis Soret

Composition de André Rochard /1999

Refrain 1

♩ = 72

16' 16'

A

20' 20'

Refrain 2

24' 24'

B

28' 28'

Refrain 3

32' 32'

Danse des cornemuseux 5

C

Measures 1-4 of section C. The music is in C major and 2/4 time. Measure 1: Treble clef has a quarter note C4, eighth notes D4-E4, and a quarter note F4. Bass clef has a quarter note C3, eighth notes D3-E3, and a quarter note F3. Measure 2: Treble clef has a quarter note G4, eighth notes A4-B4, and a quarter note C5. Bass clef has a quarter note G2, eighth notes A2-B2, and a quarter note C3. Measure 3: Treble clef has a quarter note D5, eighth notes C5-B4, and a quarter note A4. Bass clef has a quarter note D3, eighth notes C3-B2, and a quarter note A2. Measure 4: Treble clef has a quarter note G4, eighth notes F4-E4, and a quarter note D4. Bass clef has a quarter note G2, eighth notes F2-E2, and a quarter note D2. All measures end with a repeat sign.

Refrain 4

Measures 1-4 of Refrain 4. Measure 1: Treble clef has a quarter note C4, eighth notes D4-E4, and a quarter note F4. Bass clef has a quarter note C3, eighth notes D3-E3, and a quarter note F3. Measure 2: Treble clef has a quarter note G4, eighth notes A4-B4, and a quarter note C5. Bass clef has a quarter note G2, eighth notes A2-B2, and a quarter note C3. Measure 3: Treble clef has a quarter note D5, eighth notes C5-B4, and a quarter note A4. Bass clef has a quarter note D3, eighth notes C3-B2, and a quarter note A2. Measure 4: Treble clef has a quarter note G4, eighth notes F4-E4, and a quarter note D4. Bass clef has a quarter note G2, eighth notes F2-E2, and a quarter note D2. All measures end with a repeat sign.

D

Measures 1-4 of section D. Measure 1: Treble clef has a quarter note D4, eighth notes E4-F4, and a quarter note G4. Bass clef has a quarter note D3, eighth notes E3-F3, and a quarter note G3. Measure 2: Treble clef has a quarter note A4, eighth notes B4-C5, and a quarter note D5. Bass clef has a quarter note A2, eighth notes B2-C3, and a quarter note D3. Measure 3: Treble clef has a quarter note E5, eighth notes D5-C5, and a quarter note B4. Bass clef has a quarter note E3, eighth notes D3-C3, and a quarter note B2. Measure 4: Treble clef has a quarter note D5, eighth notes C5-B4, and a quarter note A4. Bass clef has a quarter note D3, eighth notes C3-B2, and a quarter note A2. All measures end with a repeat sign.

Refrain 5

Measures 1-4 of Refrain 5. Measure 1: Treble clef has a quarter note D4, eighth notes E4-F4, and a quarter note G4. Bass clef has a quarter note D3, eighth notes E3-F3, and a quarter note G3. Measure 2: Treble clef has a quarter note A4, eighth notes B4-C5, and a quarter note D5. Bass clef has a quarter note A2, eighth notes B2-C3, and a quarter note D3. Measure 3: Treble clef has a quarter note E5, eighth notes D5-C5, and a quarter note B4. Bass clef has a quarter note E3, eighth notes D3-C3, and a quarter note B2. Measure 4: Treble clef has a quarter note D5, eighth notes C5-B4, and a quarter note A4. Bass clef has a quarter note D3, eighth notes C3-B2, and a quarter note A2. All measures end with a repeat sign.

Bourdons de sol
sur plusieurs octaves

Rythme

Tige de note basse = son grave de percussion
Tige de note haute = son aigu de percussion

Two musical staves. The first staff shows a low G note (G2) on a grand staff, representing the 'Bourdons de sol sur plusieurs octaves'. The second staff shows a 7/4 time signature followed by a sequence of notes: a half note G2, a quarter note G2, a quarter note G2, a quarter note G2, a quarter note G2, a quarter note G2, and a quarter note G2. The notes are marked with 'x' symbols, indicating percussion sounds.

Danse des cornemuseux 6

à Jean-Pierre Van Hees

Composition de André Rochard /1999

Refrain 1

1 $\text{♩} = 92$ 2 3 4

16' 16'

Detailed description: This block contains the musical notation for Refrain 1, measures 16' to 16'. It is written for two staves in G major (one sharp) and 8/4 time. The tempo is marked as quarter note = 92. The first staff (treble clef) contains measures 16' to 19', and the second staff (bass clef) contains measures 16' to 19'. The music is divided into four measures, each numbered 1 through 4. The first measure (16') starts with a treble clef and a key signature of one sharp (F#). The second measure (17') continues the melody. The third measure (18') continues the melody. The fourth measure (19') ends with a double bar line and repeat dots. The bass staff follows a similar pattern with a different melodic line.

A

1 2 3 4

Detailed description: This block contains the musical notation for section A, measures 1 to 4. It is written for two staves in G major (one sharp) and 8/4 time. The first staff (treble clef) contains measures 1 to 4, and the second staff (bass clef) contains measures 1 to 4. The music is divided into four measures, each numbered 1 through 4. The first measure (1) starts with a treble clef and a key signature of one sharp (F#). The second measure (2) continues the melody. The third measure (3) continues the melody. The fourth measure (4) ends with a double bar line and repeat dots. The bass staff follows a similar pattern with a different melodic line.

Refrain 2

1 2 3 4

Detailed description: This block contains the musical notation for Refrain 2, measures 1 to 4. It is written for two staves in G major (one sharp) and 8/4 time. The first staff (treble clef) contains measures 1 to 4, and the second staff (bass clef) contains measures 1 to 4. The music is divided into four measures, each numbered 1 through 4. The first measure (1) starts with a treble clef and a key signature of one sharp (F#). The second measure (2) continues the melody. The third measure (3) continues the melody. The fourth measure (4) ends with a double bar line and repeat dots. The bass staff follows a similar pattern with a different melodic line.

B

1 2 3 4

Detailed description: This block contains the musical notation for section B, measures 1 to 4. It is written for two staves in G major (one sharp) and 8/4 time. The first staff (treble clef) contains measures 1 to 4, and the second staff (bass clef) contains measures 1 to 4. The music is divided into four measures, each numbered 1 through 4. The first measure (1) starts with a treble clef and a key signature of one sharp (F#). The second measure (2) continues the melody. The third measure (3) continues the melody. The fourth measure (4) ends with a double bar line and repeat dots. The bass staff follows a similar pattern with a different melodic line. There are triplets indicated by a '3' and a bracket in measures 1 and 2 of both staves.

Refrain 3

1 2 3 4

Detailed description: This block contains the musical notation for Refrain 3, measures 1 to 4. It is written for two staves in G major (one sharp) and 8/4 time. The first staff (treble clef) contains measures 1 to 4, and the second staff (bass clef) contains measures 1 to 4. The music is divided into four measures, each numbered 1 through 4. The first measure (1) starts with a treble clef and a key signature of one sharp (F#). The second measure (2) continues the melody. The third measure (3) continues the melody. The fourth measure (4) ends with a double bar line and repeat dots. The bass staff follows a similar pattern with a different melodic line.

Danse des cornemuseux 6

C

Refrain 4

The musical score for 'The Rose Tree' is presented in a two-staff format. The key signature is one sharp (F#), and the time signature is 4/4. The melody is written in the treble clef, and the accompaniment is in the bass clef. The piece is divided into four measures, each labeled with a number above the staff. The melody features a mix of eighth and sixteenth notes, with some measures containing beamed sixteenth notes. The accompaniment consists of eighth and sixteenth notes, often beamed together, providing a steady rhythmic foundation. The piece concludes with a double bar line.

D

The musical score for 'The Rose Tree' is presented in two systems. The first system contains measures 1 through 4, and the second system contains measures 5 through 8. The music is written for piano in G major (one sharp) and 2/4 time. The melody is in the right hand, and the accompaniment is in the left hand. The key signature is one sharp (F#). The time signature is 2/4. The score is divided into four measures, each labeled with a number (1, 2, 3, 4) above the staff. The melody consists of eighth and sixteenth notes, while the accompaniment consists of quarter and eighth notes. The piece ends with a double bar line and repeat dots in the final measure of the second system.

Refrain 5

1. The Rose Tree
2. The Rose Tree
3. The Rose Tree

1. 2.

Bourçons de sol sur plusieurs octaves

Rythme

[illegible]

Tige de note basse = son grave de percussion
Tige de note haute = son aigu de percussion

Danse des cornemuseux 7

à Pierre Hervé

Composition de André Rochard /1999

Refrain 1

1 $\text{♩} = 120$ 2 3 4

16'

16'

Detailed description: This block contains the musical notation for the first four measures of Refrain 1. It is written for two staves in 5/8 time, with a tempo marking of quarter note = 120. The key signature has one flat (B-flat). Measure 1: Treble clef has a half note B4 and a quarter note A4; Bass clef has a half note G3 and a quarter note F3. Measure 2: Treble clef has a half note G4 and a quarter note E4; Bass clef has a half note E3 and a quarter note D3. Measure 3: Treble clef has a half note D4 and a quarter note C4; Bass clef has a half note C3 and a quarter note B2. Measure 4: Treble clef has a half note B3 and a quarter note A3; Bass clef has a half note A2 and a quarter note G2. Each measure ends with a repeat sign.

A

1 2 3 4

Detailed description: This block contains the musical notation for section A, measures 1 to 4. It is written for two staves in 5/8 time. Measure 1: Treble clef has a half note B4 and a quarter note A4; Bass clef has a half note G3 and a quarter note F3. Measure 2: Treble clef has a half note G4 and a quarter note E4; Bass clef has a half note E3 and a quarter note D3. Measure 3: Treble clef has a half note D4 and a quarter note C4; Bass clef has a half note C3 and a quarter note B2. Measure 4: Treble clef has a half note B3 and a quarter note A3; Bass clef has a half note A2 and a quarter note G2. Each measure ends with a repeat sign.

Refrain 2

1 2 3 4

Detailed description: This block contains the musical notation for the first four measures of Refrain 2. It is written for two staves in 5/8 time. Measure 1: Treble clef has a half note B4 and a quarter note A4; Bass clef has a half note G3 and a quarter note F3. Measure 2: Treble clef has a half note G4 and a quarter note E4; Bass clef has a half note E3 and a quarter note D3. Measure 3: Treble clef has a half note D4 and a quarter note C4; Bass clef has a half note C3 and a quarter note B2. Measure 4: Treble clef has a half note B3 and a quarter note A3; Bass clef has a half note A2 and a quarter note G2. Each measure ends with a repeat sign.

B

1 2 3 4

Detailed description: This block contains the musical notation for section B, measures 1 to 4. It is written for two staves in 5/8 time. Measure 1: Treble clef has a half note B4 and a quarter note A4; Bass clef has a half note G3 and a quarter note F3. Measure 2: Treble clef has a half note G4 and a quarter note E4; Bass clef has a half note E3 and a quarter note D3. Measure 3: Treble clef has a half note D4 and a quarter note C4; Bass clef has a half note C3 and a quarter note B2. Measure 4: Treble clef has a half note B3 and a quarter note A3; Bass clef has a half note A2 and a quarter note G2. Each measure ends with a repeat sign.

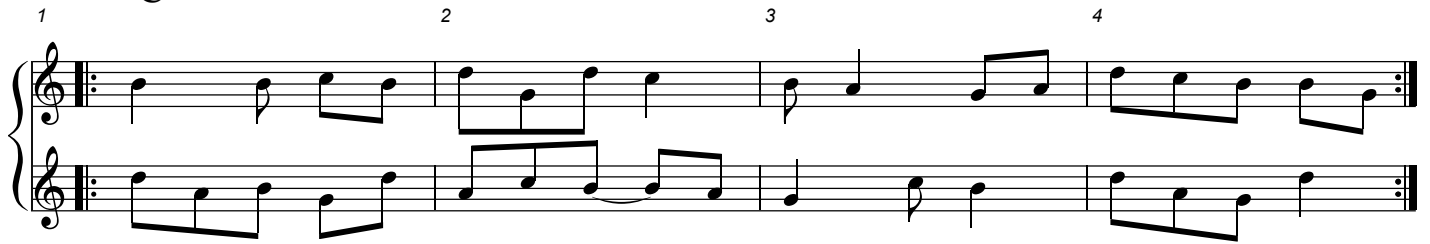
Refrain 3

1 2 3 4

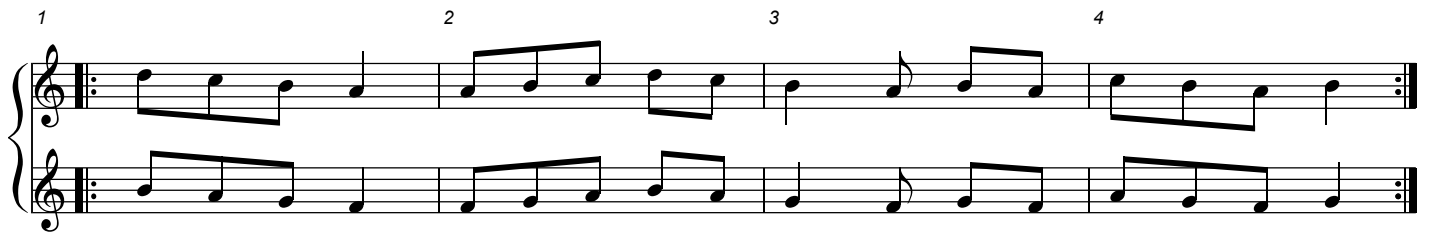
Detailed description: This block contains the musical notation for the first four measures of Refrain 3. It is written for two staves in 5/8 time. Measure 1: Treble clef has a half note B4 and a quarter note A4; Bass clef has a half note G3 and a quarter note F3. Measure 2: Treble clef has a half note G4 and a quarter note E4; Bass clef has a half note E3 and a quarter note D3. Measure 3: Treble clef has a half note D4 and a quarter note C4; Bass clef has a half note C3 and a quarter note B2. Measure 4: Treble clef has a half note B3 and a quarter note A3; Bass clef has a half note A2 and a quarter note G2. Each measure ends with a repeat sign.

Danse des cornemuseux 7

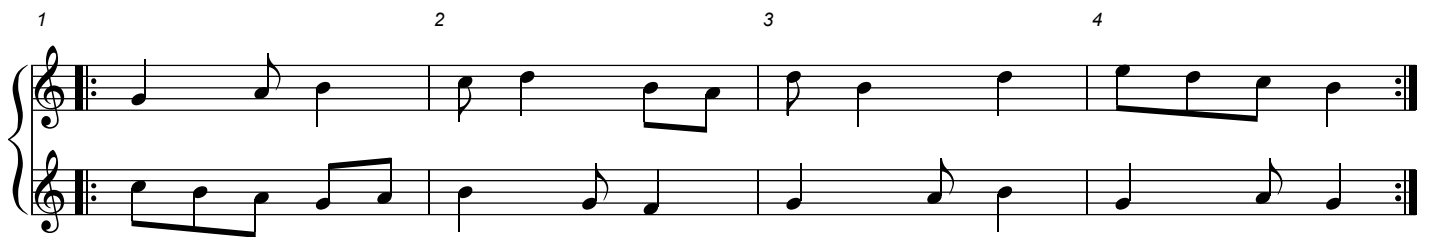
C



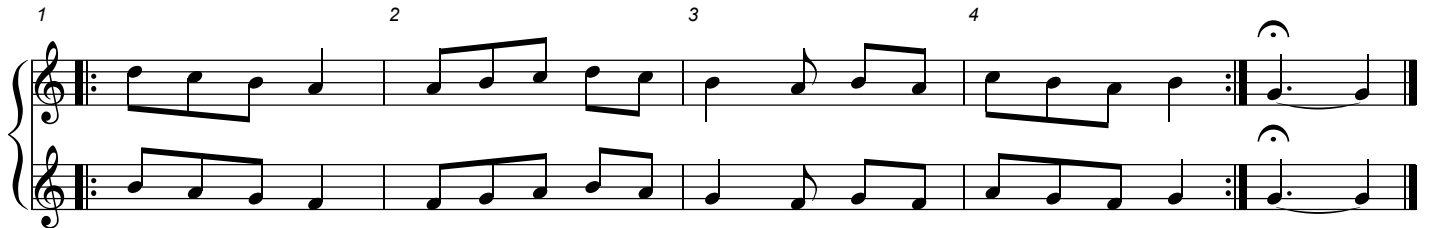
Refrain 4



D



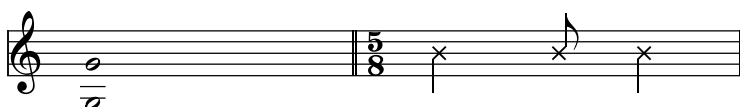
Refrain 5



Bourdons de sol
sur plusieurs octaves

Rythme
Structure : 3-2

Tige de note basse = son grave de percussion
Tige de note haute = son aigu de percussion



Danse des cornemuseux 8

à Raph Thierry

Composition de André Rochard /1999

Refrain 1

1 2 3 4

♩ = 80

16'

A

1 2 3 4

Refrain 2

1 2 3 4

B

1 2 3 4

Refrain 3

1 2 3 4

Danse des cornemuseux 8

1 C 2 3 4

1 Refrain 4 2 3 4

1 D 2 3 4

1 Refrain 5 2 3

Bourçons de sol
sur plusieurs octaves

Rythme en : 6/8 + 3/4
Structure : 3-3-2-2-2

Tige de note basse = son grave de percussion
Tige de note haute = son aigu de percussion

Danse des cornemuseux 9

à Robert Amyot

Forme : rf1 A rf2 B rf3 C rf4 D rf5 Coda

Composition de André Rochard /1999

♩ = 120 Refrains 1 2 3 4 5

1 2

3 4 *Da* Φ Coda Φ *Fine*

1 A 2

3 4 3

1 B 2

3 4

Danse des cornemuseux 9

1 **C** Rythme 2 2

1 2

3 4

Handwritten musical score for 'The Rose Tree' in G major (one sharp). The score is written for two staves (treble and bass clef). The melody is in the treble staff, and the accompaniment is in the bass staff. The key signature is one sharp (F#). The time signature is 4/4. The score consists of two measures, each with a repeat sign at the end. The first measure is marked with a '3' above the treble staff, and the second measure is marked with a '4' above the treble staff. The melody in the first measure is: G4 (quarter), A4 (quarter), B4 (quarter), A4-G4 (beamed eighth notes), F#4 (quarter), E4 (half). The melody in the second measure is: D5 (quarter), C#5 (quarter), B4 (quarter), A4-G4 (beamed eighth notes), F#4 (quarter), E4 (half). The accompaniment in the first measure is: G3 (quarter), A3 (quarter), B3 (quarter), A3-G3 (beamed eighth notes), F#3 (quarter), E3 (half). The accompaniment in the second measure is: D4 (quarter), C#4 (quarter), B3 (quarter), A3-G3 (beamed eighth notes), F#3 (quarter), E3 (half). The score ends with a double bar line and repeat dots.

Rythme 1

D

3 4

Handwritten musical score for 'The Rose Tree' in G major (one sharp). The score is written for piano on a grand staff (treble and bass clefs). The melody is in the treble clef, and the accompaniment is in the bass clef. The key signature has one sharp (F#). The time signature is 4/4. The score consists of two systems. The first system has a measure number '3' above the first measure. The second system has a measure number '4' above the first measure. The melody is a simple, folk-like tune, and the accompaniment provides a steady harmonic support.

Bourçons de sol
sur plusieurs
octaves

Rythme 1

Rythme 2 en 22/8 ici marqué 11/4
Structure : 3-3-3-3-3-2-2

The musical notation shows a single staff with a treble clef. It begins with a whole note G below the staff, labeled 'sol'. This is followed by a series of notes and rests representing two rhythms. The first rhythm, 'Rythme 1', consists of eighth notes and rests. The second rhythm, 'Rythme 2', is marked as 11/4 and follows a 3-3-3-3-3-2-2 structure. Notes are placed on various lines and spaces to represent different octaves of the pitch 'sol'.

Danse des cornemuseux 10

à Dominique Paris

Composition de André Rochard /1999

Refrain 1

1 $\text{♩} = 108$ 2 3 4

16' 16'

A

1 2 3 4

16'

Refrain 2

1 2 3 4

16'

B

1 2 3 4

16'

Refrain 3

1 2 3 4

16'

Danse des cornemuseux 10

C

1 2 3 4

Refrain 4

1 2 3 4

D

1 2 3 4

Refrain 5

1 2 3

Bourdons de sol
sur plusieurs
octaves

Rythme
Structure : 2-2-3-2-2-2

Tige de note basse = son grave de percussion
Tige de note haute = son aigu de percussion

Danse des cornemuseux 11

à Sophie Jacques de Dixmude

Composition de André Rochard /1999

Refrain 1

16'

♩ = 80

1 2 3 4

A

1 2 3 4

Refrain 2

1 2 3 4

B

1 2 3 4

Refrain 3

1 2 3 4

Danse des cornemuseux 11

C

Section C, measures 1-4. The music is in G major (one sharp) and 4/4 time. Measure 1: Treble clef has a quarter note G, eighth notes A-B, quarter note C, eighth notes D-E, quarter note F, eighth notes G-A, quarter note B. Bass clef has a half note G, quarter note A, half note B, quarter note C. Measure 2: Treble clef has a quarter note B, eighth notes A-G, quarter note F, eighth notes E-D, quarter note C, eighth notes B-A, quarter note G. Bass clef has a half note B, quarter note C, half note D, quarter note E. Measure 3: Treble clef has a quarter note G, eighth notes F-E, quarter note D, eighth notes C-B, quarter note A, eighth notes G-F, quarter note E. Bass clef has a half note G, quarter note A, half note B, quarter note C. Measure 4: Treble clef has a quarter note D, eighth notes C-B, quarter note A, eighth notes G-F, quarter note E, eighth notes D-C, quarter note B. Bass clef has a half note D, quarter note E, half note F, quarter note G.

Refrain 4

Refrain 4, measures 1-4. Measure 1: Treble clef has a quarter note G, eighth notes A-B, quarter note C, eighth notes D-E, quarter note F, eighth notes G-A, quarter note B. Bass clef has a half note G, quarter note A, half note B, quarter note C. Measure 2: Treble clef has a quarter note B, eighth notes A-G, quarter note F, eighth notes E-D, quarter note C, eighth notes B-A, quarter note G. Bass clef has a half note B, quarter note C, half note D, quarter note E. Measure 3: Treble clef has a quarter note G, eighth notes F-E, quarter note D, eighth notes C-B, quarter note A, eighth notes G-F, quarter note E. Bass clef has a half note G, quarter note A, half note B, quarter note C. Measure 4: Treble clef has a quarter note D, eighth notes C-B, quarter note A, eighth notes G-F, quarter note E, eighth notes D-C, quarter note B. Bass clef has a half note D, quarter note E, half note F, quarter note G.

D

Section D, measures 1-4. Measure 1: Treble clef has a quarter note G, eighth notes A-B, quarter note C, eighth notes D-E, quarter note F, eighth notes G-A, quarter note B. Bass clef has a half note G, quarter note A, half note B, quarter note C. Measure 2: Treble clef has a quarter note B, eighth notes A-G, quarter note F, eighth notes E-D, quarter note C, eighth notes B-A, quarter note G. Bass clef has a half note B, quarter note C, half note D, quarter note E. Measure 3: Treble clef has a quarter note G, eighth notes F-E, quarter note D, eighth notes C-B, quarter note A, eighth notes G-F, quarter note E. Bass clef has a half note G, quarter note A, half note B, quarter note C. Measure 4: Treble clef has a quarter note D, eighth notes C-B, quarter note A, eighth notes G-F, quarter note E, eighth notes D-C, quarter note B. Bass clef has a half note D, quarter note E, half note F, quarter note G.

Refrain 5

Refrain 5, measures 1-4. Measure 1: Treble clef has a quarter note G, eighth notes A-B, quarter note C, eighth notes D-E, quarter note F, eighth notes G-A, quarter note B. Bass clef has a half note G, quarter note A, half note B, quarter note C. Measure 2: Treble clef has a quarter note B, eighth notes A-G, quarter note F, eighth notes E-D, quarter note C, eighth notes B-A, quarter note G. Bass clef has a half note B, quarter note C, half note D, quarter note E. Measure 3: Treble clef has a quarter note G, eighth notes F-E, quarter note D, eighth notes C-B, quarter note A, eighth notes G-F, quarter note E. Bass clef has a half note G, quarter note A, half note B, quarter note C. Measure 4: Treble clef has a quarter note D, eighth notes C-B, quarter note A, eighth notes G-F, quarter note E, eighth notes D-C, quarter note B. Bass clef has a half note D, quarter note E, half note F, quarter note G.

Bourdons de sol
sur plusieurs octaves

Rythme
Structure : 3-3-2-2-3-3

Tige de note basse = son grave de percussion
Tige de note haute = son aigu de percussion

Rhythmic notation for the Bourdons de sol. It shows a treble clef with a G note on a low line. A double bar line is followed by a 16/8 time signature. The rhythm is represented by a sequence of notes with stems: a quarter note (low), an eighth note (low), a quarter note (low), an eighth note (low), a quarter note (low), an eighth note (low), a quarter note (low), an eighth note (low), a quarter note (low), an eighth note (low), a quarter note (low), an eighth note (low), a quarter note (low), an eighth note (low), a quarter note (low), an eighth note (low). The notes are grouped in pairs of eighth notes.

Danse des cornemuseux 12

à Bernard Blanc

Composition de André Rochard /1999

Refrain 1

1 $\text{♩} = 80$ 2 3 4



A

1 2 3 4



Refrain 2

1 2 3 4



B

1 2 3 4



Refrain 3

1 2 3 4



C

1 2 3 (à la noire pointée) 4



Danse des cornemuseux 12

Refrain 4

1 2 3 4

D (Rythme 2)

1 2 3 4

$\text{♩} = 120$

Refrain 5

1 (Rythme 1) 2 3

Bourçons de sol
sur plusieurs octaves

Rythme 1 en : $6/8 + 3/4$
Structure : 3-3-2-2-2

Rythme 2 (à la noire)

Tige de note basse = son grave de percussion
Tige de note haute = son aigu de percussion

Collection : "Musiques à bourdons"

Recueil 1 / Danses calendaires

12 pièces pour 2 instruments / bourdons rythmiques / 1 percussion

Recueil 2 / Danses des cornemuseux

12 pièces pour 1 ou 2 cornemuses égales (sol/sol) ou 1 ou 2 instruments / bourdons / 1 percussion

Recueil 3 / Danses des Grâces et des Muses

12 pièces pour 2 instruments / bourdons rythmiques / 1 percussion

Recueil 4 / Douze pièces en trio

Pour 3 cornemuses ou 3 instruments / bourdons / 1 percussion

Recueil 5 / Douze pièces en quatuor

Pour 4 cornemuses ou 4 instruments / bourdons / 1 percussion

Recueil 6 / Douze duos en rondo

Pour 2 cornemuses à la quinte (do/sol) ou 2 instruments / bourdons / 1 percussion

Recueil 7 / Cascades

12 pièces pour 2 cornemuses à l'octave (do/do) ou 2 instruments / bourdons / 1 percussion

Recueil 8 / Danses des violoneux

Pour 2 instruments (violons) / bourdons / 1 percussion

Recueil 9 / Danses des cornemuseux (vol 2)

12 pièces pour 2 cornemuses égales (sol/sol) ou 2 instruments / bourdons / 1 percussion

Recueil 10 / Danses des eu...

12 pièces pour 2 instruments / bourdons / 1 percussion

Recueil 11 / Balades

12 pièces pour 2 instruments / bourdons / 1 percussion

Recueil 12 / Douze duos en rondo (vol 2)

Pour 2 cornemuses à la quinte (ré/la) ou 2 instruments / bourdons / 1 percussion